



Portable
marking
solutions

xm700
xf520
xf530

PORTABLE RANGE

Ergonomic and flexible, Technifor complete range of mobile solutions guarantee a durable and individual marking of all your parts, whatever your application.

Meet your identification and traceability requirements

- During the production cycle.
- Post-manufacturing marking or at the end of a production line.
- In maintenance room.
- In inventory control and quality control.
- Before machinery and finished products shipping.
- On operating site and worksite.

Use permanent marking:

Your products will be identified throughout their lifecycle.

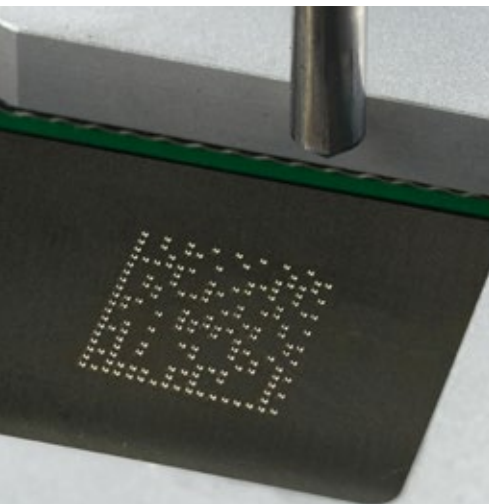


Ensure legible and indelible marks

- **Robust and reliable solutions** resistant to any environment.
- **High quality marks** in very fast cycle times.

Choose the good impact

- **An accurate technology:** micro-percussion creates rapid indent marking on the material surface without any stress on the part and without any chip removal.
- **Marking parameters** adapt to the different part shapes and materials and can all be saved (height, depth, positioning...).
- **An economic and ecologic solution that respects the environment:** no solvents, stickers, ink or other additives. No consumables, reduced maintenance and low energy consumption.





Marking Made Easy

Our portable marking solutions are unique products in terms of **ease-of-use** and **connectivity**.

Integrated into the marking gun or remote, the control unit is equipped with a **new generation of ultra-fast electronics**.

Its wide and graphical interface allows the operator to quickly compose the required mark and guides him step by step till the realization on the part.

Software dedicated to identification and traceability

Simple and user-friendly, the integrated marking program offers many functions, proven across all industry for over 30 years.

- Texts, logos, serial numbers, variables, counters, hours, 2D DataMatrix™ codes...
- Graphical preview
- Extended memory capacity
- Font catalog
- Import/export of logos, fonts, merging files, software update...
- Documentation and interface available in **over 19 languages**
- Many additional functions



xm700

This solution identifies permanently all bulky or difficult to access products and equipment.

Pure performance in your hand

- **Powerful:** Deep mark on the hardest surfaces.
- **Ergonomic:** makes marking easy on vertical or inclined surfaces.
- **High quality marks:** permanent marking on any shape and material.
- **Flexible connectivity** for easy data exchange with a PC, a code reader or a USB key.

The deepest mark in its class.



Choose freedom

- **"Touch'n Mark":** Intuitive touch-screen interface. Large navigation icons give direct access to desired functions with your finger, a stylus, and even wearing a glove.
- **Full mobility:** the integrated control unit and the powerful belt battery allows you to mark everything everywhere, even outdoors.

Meet your marking requirements

- **Reliable:** Robust components and shock-resistant composite materials.
- **Economical:** without consumable, reduced maintenance, sharpenable stylus point.
- **Ready to mark:** Operational out of the box. No special set-up or training required. Begin marking immediately using local language menus.



Accessories

7" industrial color touch screen with reinforced casing and touch pencil

2 USB ports
+ 1 RS232 port
+ 1 Ethernet port

Reinforced heavy-duty cable



Marking trigger

M2S solid carbide marking tool:

- Power
- optimal cooling
- durability

Adjustable metal feet:

- perfect support
- V-groove for tube marking

Powered by battery or directly from the mains supply:



The longest autonomy on the market:

- Lithium-ion technology battery
- light weight
- constant power



- Complete range of accessories:

Support column

Lighting of the marking area

Side handle (right- or left-handing)

Lifting ring for balancer

Barcode and 2D code reader

Waterproof suitcase

Identification & traceability at your fingertips

With a large screen and navigation icons, the interface includes a touch screen and allows easy and intuitive operation.

Mark each item individually with references, serial numbers, batch numbers, date, 2D codes and save your marking settings.

Easily identify your machinery & equipment, assets, tooling, construction equipment, metal structures...

Technical characteristics

- Technology: Electromagnetic micro-percussion
- Marking area: 80 x 30 mm
- Integrated control unit with touch screen software



XF520CP/m

This marking gun offers both speed and handling qualities to identify permanently all types of parts.

Step up a gear

- **High-performance:** Uses the same technology as our integrated marking machines, running 24hours/day on automated production lines: serial numbers, logos, Data Matrix™ codes... up to **10 characters per second!**

- **Hand-adapted:** Lightweight, its compact size can mark directly and accurately all your products and equipment.

The most compact marking gun on the market.



Ergonomics and versatility at the heart of your application

Linked to a barcode scanner, a keyboard or other computer systems, the XF520 is able to receive any data to be marked. It meets your identification needs on all parts, shapes and materials (integrated V-shaped universal feet system).

Perfectly balanced and easy to handle (intuitive grip), it offers optimal stability, without uncomfortable vibration.

Technical characteristics

- **Technology:** Electromagnetic or pneumatic micro-percussion
- **Marking area:** 50 x 20 mm
- **Remote UC500 control unit**

The XF530 portable marking solution meets the needs of deep marking in the most severe industrial environments.

XF530P/m



Concentrated power for deep marking

- **Powerful:** fitted with an extremely powerful stylus able to trace large characters, the XF530 can mark deeply any surface and material.

- **Versatile:** with a large marking area, orientable handles, adjustable V-shaped universal feet, it fits your part and suits your operation.

The most powerful marking solution of its generation.

A traceability that stands the test of time

Tamper-proof and sustainable, the marks are not affected by finishing operations, painting, climatic conditions, the contaminants....

Used in the harshest environments, the XF530 has proven sturdiness and reliability in steel, mining, oil&gas, metal building, shipyards or handling systems industry.

Technical characteristics

- **Technology:** Electromagnetic or pneumatic micro-percussion
- **Marking area:** 200 x 50 mm
- **Remote UC500 control unit**





Versatile solutions:

- **Individual identification** of metal and plastic parts.
- **Permanent marking** on flat and curved surfaces.
- **Deep marks** on hard materials, rough, painted parts.
- **Direct part marking** before treatment (sandblasting, galvanizing, shotblasting, anti-corrosion paintings..).
- **Anti-theft and anti-counterfeiting identification.**

Mechanical
Automotive
Oil&gas
Steel construction
Mining industry

Military and armament
Marine
Railway
Lifting&material handling systems
Public&industrial equipment



GRAVOTECH SDN BHD
No. 29, Jalan Puteri 5/10
Bandar Puteri
47100 Puchong, Selangor
MALAYSIA 547937-W
Tel: +(60) 3-806-855-12 &
+(60) 806-835-12
Fax: +(60) 3-806-125-13
sales@gravograph.com.my

GRAVOGRAPH SINGAPORE
PTE LTD

#06-09 8 @Tradehub 21,
8 Boon Lay Way
SINGAPORE 609964
Tel: 65-63161512
Fax: 65-63161513
sales@gravograph.com.sg